

Cynomolgus Transferrin R/CD71 Protein

Cat. No. TFR-CM101



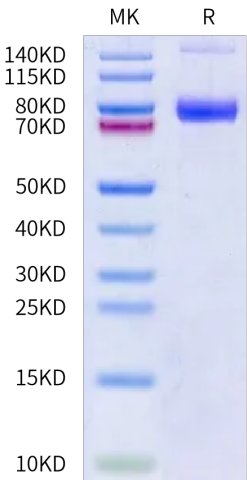
Description	
Source	Recombinant Cynomolgus Transferrin R/CD71 Protein is expressed from HEK293 with His tag at the N-Terminus. It contains Cys89-Phe760.
Accession	XP_005545315.1
Molecular Weight	The protein has a predicted MW of 76.3 kDa. Due to glycosylation, the protein migrates to 78-90 kDa based on Bis-Tris PAGE result.
Endotoxin	Less than 0.1 EU per µg by the LAL method.
Purity	> 90% as determined by Bis-Tris PAGE > 90% as determined by HPLC

Formulation and Storage	
Formulation	Lyophilized from 0.22µm filtered solution in PBS, 8% trehalose (pH 7.4).
Reconstitution	Dissolve the lyophilized protein in distilled water. Please refer to the Certificate of Analysis for detailed instructions.
Storage	-20 to -80°C for 12 months as supplied from date of receipt. -80°C for 3 months after reconstitution. Recommend to aliquot the protein into smaller quantities for optimal storage. Please minimize freeze-thaw cycles.

Background	
The transferrin receptor (CD71) is known as a receptor for IgA1 on mesangial cells. The transcript and protein expression of glomerular CD71 was determined by real-time polymerase chain reaction and immunohistochemistry. Human mesangial cells (HMCs) were treated with sera from IgAN patients and expression levels of CD71 and inflammatory cytokine markers were compared according to disease status.	

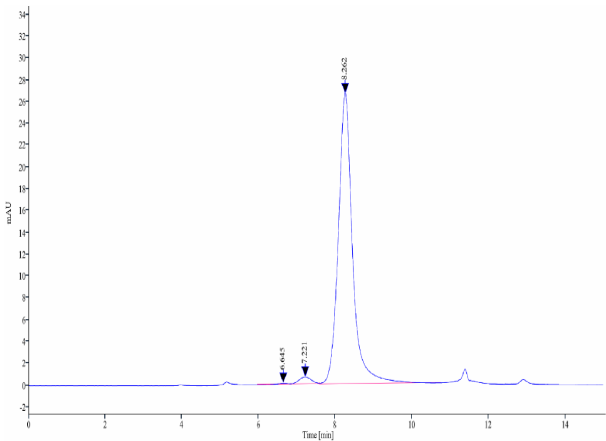
Assay Data

Bis-Tris PAGE



Cynomolgus Transferrin R on Bis-Tris PAGE under reduced condition. The purity is greater than 90%.

SEC-HPLC



The purity of Cynomolgus Transferrin R is greater than 90% as determined by SEC-HPLC.

Cynomolgus Transferrin R/CD71 Protein

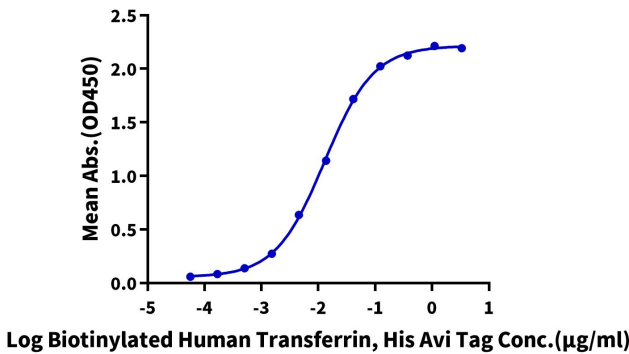
Cat. No. TFR-CM101



Assay Data

ELISA Data

**Cynomolgus Transferrin R, His Tag ELISA**  
0.2µg Cynomolgus Transferrin R, His Tag Per Well



Immobilized Cynomolgus Transferrin R, His Tag at 2µg/ml (100µl/well) on the plate. Dose response curve for Biotinylated Human Transferrin, His Avi Tag with the EC50 of 12.9ng/ml determined by ELISA.